

DISMANTLING JOINT TYPE KL/L1

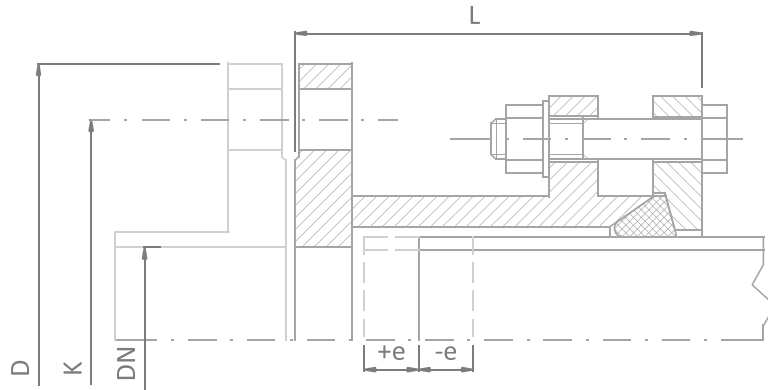
- dismantling joint (pipe fitting) with axial mounting clearance, applied for installing and removing various types of shut-off and regulating valves,
- possibility of customising face to face length and flange connections,
- dismantling joint is intended for operation with air, gas, drinking water, process water, sewage and other media,
- all stainless steel elements undergo etching and passivation by dipping or spraying,
- dismantling joint KL/L1 is used in water supply management and waste-water treatment, power generation, mining, chemical, petrochemical, metallurgical, cement and paper industries.

TECHNICAL DATA

| | |
|-----------------------------------|--|
| Flange drilling: | PN 2,5; PN 6; PN 10; PN 16; PN 25 or others |
| Nominal diameter: | DN 50 to DN 2400. Customised diameters and diameters above DN 2400 made to special orders |
| Material: | carbon steels, stainless steels, acid resistant steels or others |
| Corrosion protection: | primer painting, epoxy/bitumen, coating, zinc plating or hot dip galvanization, etching and passivation (stainless and acid resistant steels) |
| Seal: | NBR, EPDM, Silicone, Viton or others |
| Standardized elements: | galvanized, A2, A4 |



Dismantling joint type KL/L1



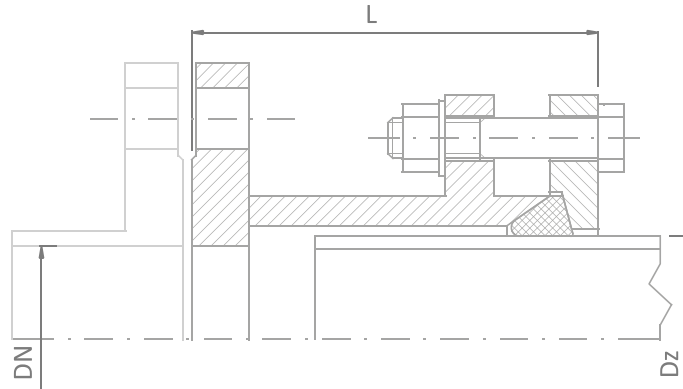
PN-EN 1092-1

Design dimensions based on PN10

| DN [mm] | Face to face L [mm] | Mounting clearance e +/- [mm] | Outside diameter D [mm] | Pitch circle diameter K [mm] | Number of threaded rods [pcs.] | Connection hole diameter [mm] | Weight [kg] |
|---------|---------------------|-------------------------------|-------------------------|------------------------------|--------------------------------|-------------------------------|-------------|
| 50 | 140 | 50 | 165 | 125 | 4 | 18 | 6,5 |
| 65 | 140 | 50 | 185 | 145 | 8 | 18 | 9 |
| 80 | 140 | 50 | 200 | 160 | 8 | 18 | 11,5 |
| 100 | 140 | 50 | 220 | 180 | 8 | 18 | 13 |
| 125 | 160 | 55 | 250 | 210 | 8 | 18 | 17 |
| 150 | 160 | 55 | 285 | 240 | 8 | 23 | 22 |
| 200 | 160 | 55 | 340 | 295 | 8 | 23 | 29 |
| 250 | 175 | 60 | 395 | 350 | 12 | 23 | 38 |
| 300 | 175 | 60 | 445 | 400 | 12 | 23 | 43 |
| 350 | 175 | 60 | 505 | 460 | 16 | 23 | 51 |
| 400 | 175 | 60 | 565 | 515 | 16 | 27 | 61 |
| 450 | 175 | 60 | 615 | 565 | 20 | 27 | 70 |
| 500 | 175 | 60 | 670 | 620 | 20 | 27 | 78 |
| 600 | 175 | 60 | 780 | 725 | 20 | 30 | 100 |
| 700 | 180 | 60 | 895 | 840 | 24 | 30 | 132 |
| 800 | 180 | 60 | 1015 | 950 | 24 | 33 | 174 |
| 900 | 180 | 60 | 1115 | 1050 | 28 | 33 | 192 |
| 1000 | 200 | 65 | 1230 | 1160 | 28 | 36 | 221 |
| 1200 | 200 | 65 | 1455 | 1380 | 32 | 39 | 332 |
| 1400 | 210 | 65 | 1675 | 1590 | 36 | 42 | 433 |
| 1600 | 210 | 65 | 1915 | 1820 | 40 | 48 | 573 |
| 1800 | 220 | 65 | 2115 | 2020 | 44 | 48 | 712 |
| 2000 | 220 | 65 | 2325 | 2230 | 48 | 48 | 846 |

Other versions available on special order.

Dismantling joint type KL/L1 Order form



Material*:

1. Carbon steel (S235JR/S355JR or others), with one of available coatings: epoxy/bitumen/galvanized
2. Stainless steel and acid resistant steel (1.4301/1.4541/1.4571 or others)

Standardized elements*:

Galvanized/A2/A4

Seal*:

Silicone/EPDM/NBR/Viton

Dimensions:

| | |
|-----------------------|-----------|
| Nominal diameter | DN= |
| Face to face length** | L= |
| Pipe diameter | Dz= |

* delete as appropriate, other versions available on special order

** only in the case of non-standard variants

REMARKS:

.....

.....

.....

.....

.....

.....

.....



multivalve

Multivalve Sp. z o. o.
44-109 Gliwice, ul. Eiffel'a 6
phone: + 48 32 661 00 00
fax: + 48 32 661 00 01
multivalve@multivalve.pl
www.multivalve.pl

Certyfikat TÜV Rheinland
ISO 9001 – 2008

